

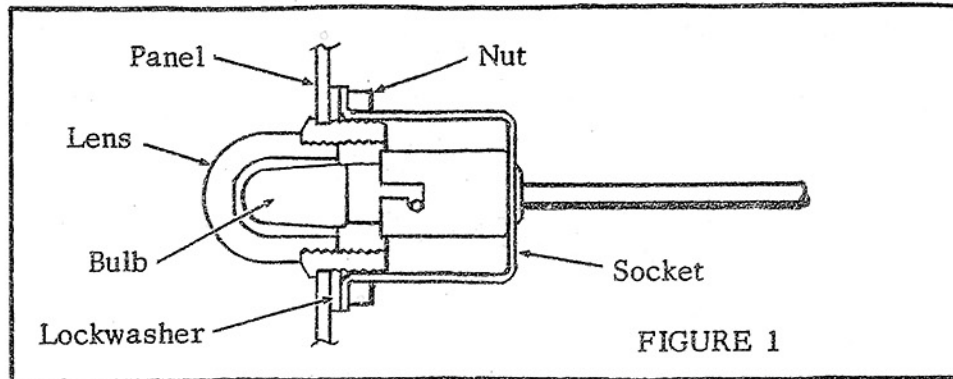
PART NUMBER67893-66
Orig. 10-65**INSTRUCTIONS****HARLEY-DAVIDSON****GENUINE PARTS
AND ACCESSORIES****HIGH BEAM INDICATOR LAMP KIT**

FIGURE 1

Assemble lamp parts as shown above on all models. If this lamp is installed on motorcycles with 6 volt electrical system, remove bulb and substitute 6 volt bulb, part No. 71090-47 (Trade No. 44). Fiber washer supplied with lamp parts is not used and should be discarded.

ELECTRA GLIDE, DUO-GLIDE AND SERVI-CAR: Remove right fork housing panel. Locate, centerpunch and cut or drill 11/16 in. dia. hole as shown in Figure 2. Install lamp assembly on panel as shown in Figure 1. Reinstall panel and attach lamp wire terminal to terminal No. 21 of fork terminal plate.

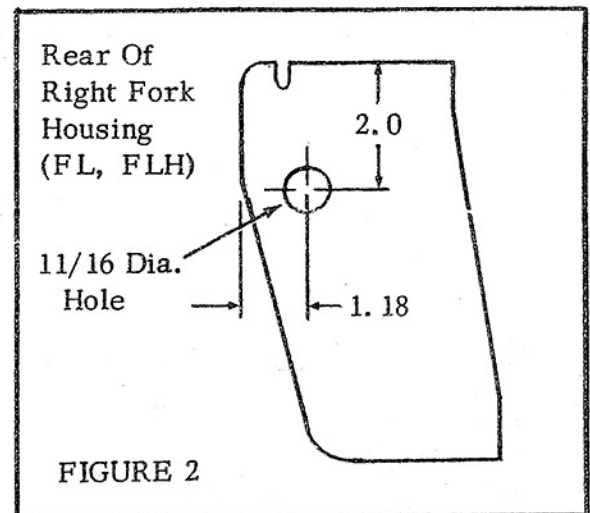


FIGURE 2

SPORTSTER XLH: Remove right fork housing panel. Locate, centerpunch and cut or drill 11/16 in. dia. hole as shown in Figure 3. Install lamp assembly on panel as shown in Figure 1. Reinstall panel and attach lamp wire terminal to terminal No. 21 of fork terminal plate.

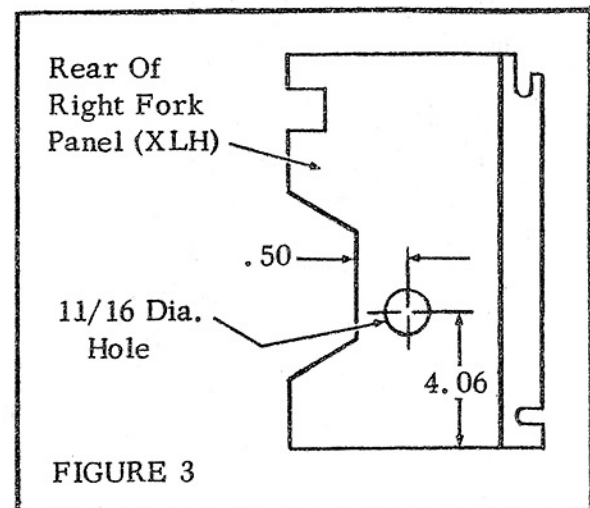


FIGURE 3

Harley-Davidson, Inc. has given us permission to provide this document on our website for the sole purpose of helping us restore our motorcycles.

Harley-Davidson, Inc. retains copyright over these materials, and NO reproduction or other use of these materials is permitted without prior authorization from Harley-Davidson, Inc.

The **Old Sportster and K-model Research Group (OSKRG)** is a group of individuals who have spent years researching the minute differences in the parts, fit, finish, and configuration of the Harley-Davidson 1952-1956 K-Models, and (early) 1957-1969 Sportster models.

The results of our research is published on our website
www.harleyKmodel.com