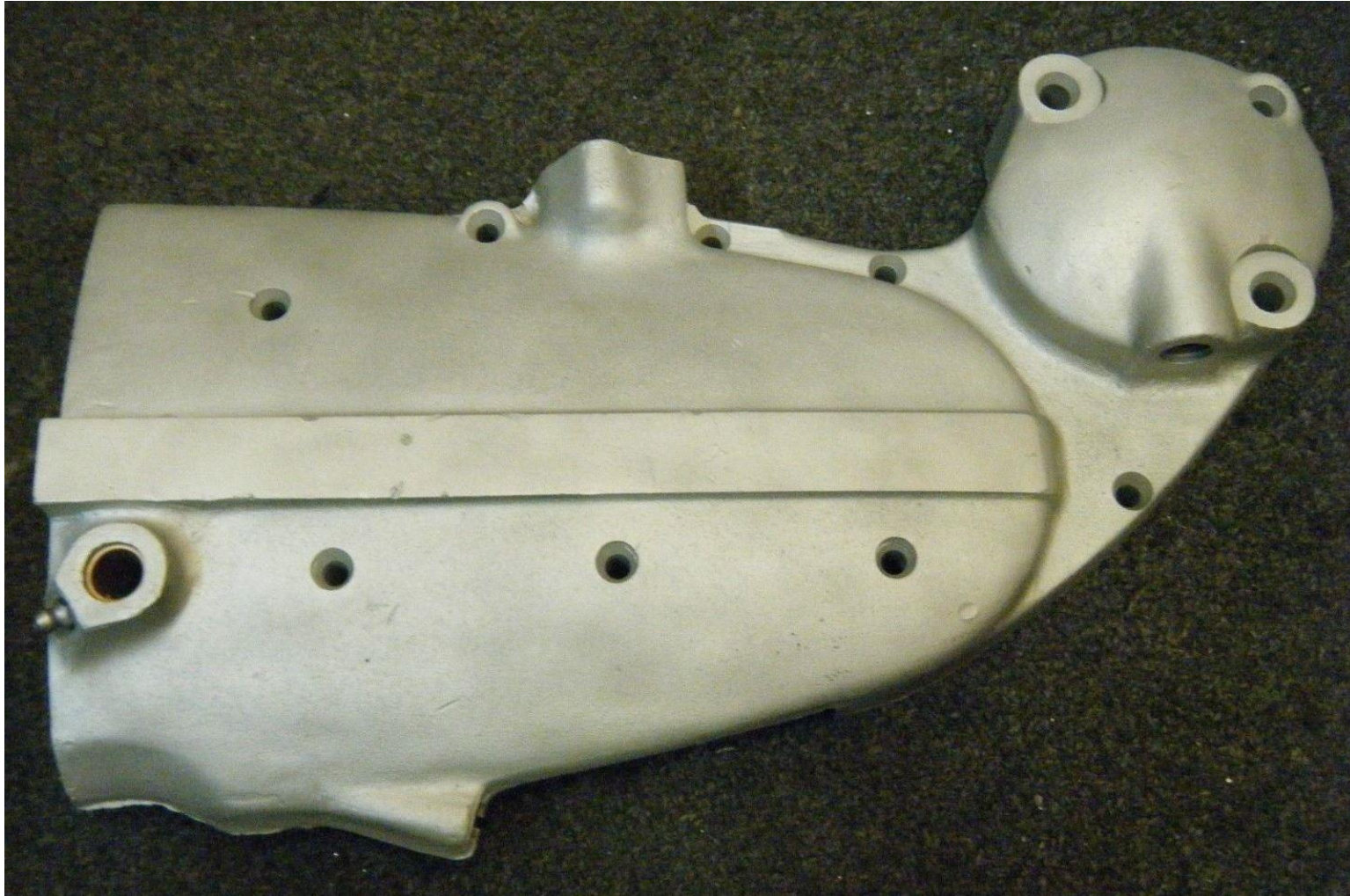


# Cam Cover (Gear Case Cover) Identification Table

52-71 K & XL Models



## Cam Cover Identification Table 52-71 K & XL Models

Parts Book Year	Cam Cover Part Number (Gear Case Cover)	All K Models	XL	XLH	XLC	XLCH
1956	25200-52	X				
1957	25200-52	X				
	25200-57		X			
1959	25200-52	X				
	25200-57	All	X	X	X	X
1963	25200-52A	1952-1956	X			
	25200-57	1957-1962		X	X	X
	25200-63	1963		X		X
1965	25200-52A	1952-1956	X			
	25200-57	1957-1962		X	X	X
	25200-63	1963-1965		X		X
1967	25200-57	1957-1962		X	X	X
	25200-63	1963-1966		X		X
		1967				X
	25201-67	1967		X		
1971	25200-63A	1957-1966	X	X	X	X
		1967-1969				X
	25201-67A	1967-1970		X		
	25200-70	1970				X
	25200-71	1971-* Cover Crankcase				X
	25201-71	1971-* Cover Crankcase		X		

## Cam Cover Change Timeline for XL-XLH & XLC-XLCH Models

Year	57	58	59	60	61	62	63	64	65	66	67	68	69	70	71
XL-XLH															
XLC-XLCH															



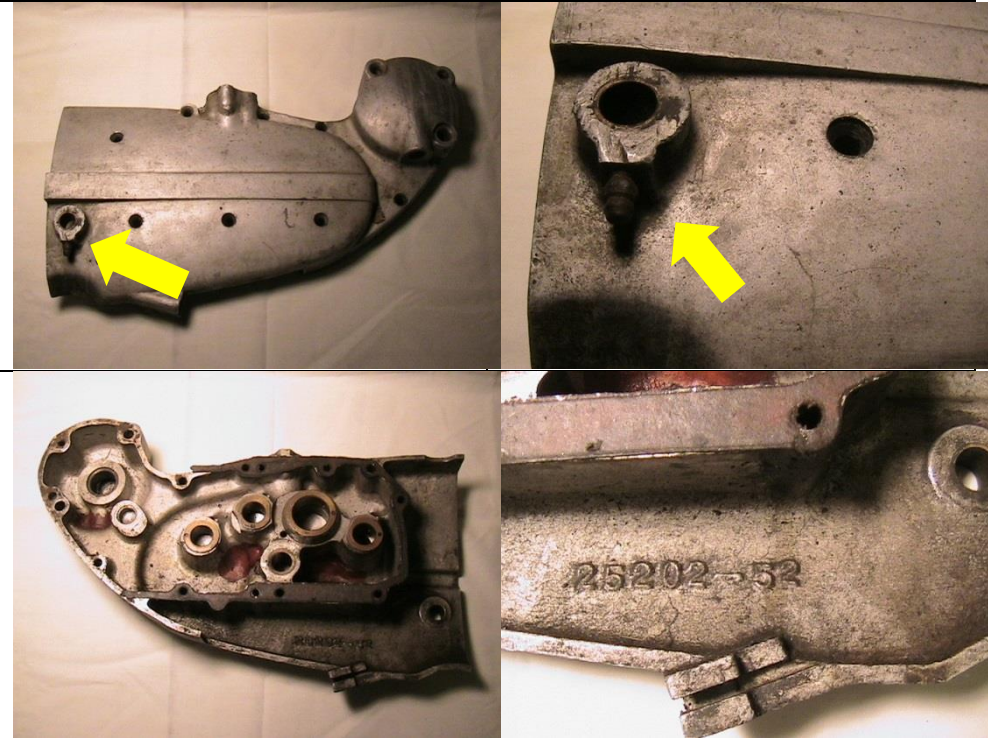
## Cam Cover Identification Table 52-71 K & XL Models with Pictures

### K Model-Early or Only Original? Version 1

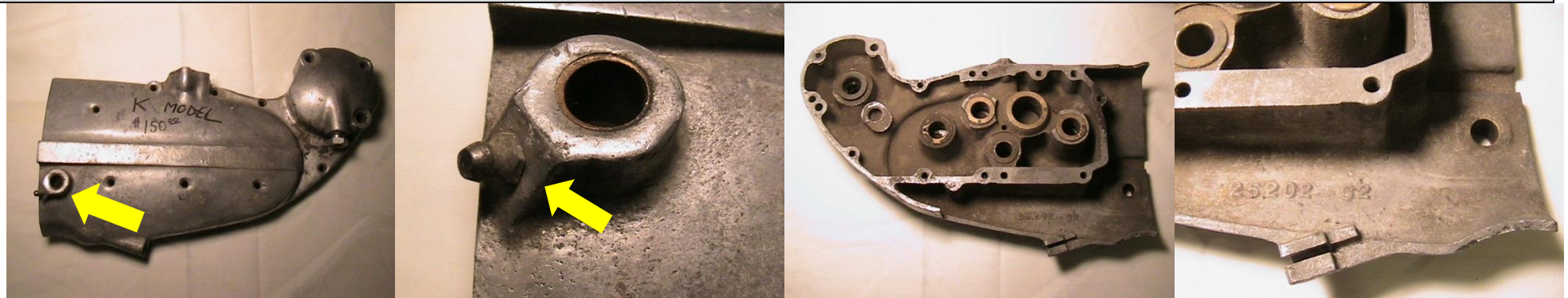
1952-1956

At this time I am unclear as to whether this version, version 1, of the “-52” Cam Cover was used until sometime most likely in the 56 model year and then a change made to the version 2 model or whether the first version was used for 52-56 and the second version was sold as a replacement that first shows up in the 63 parts book as part number 25200-52A.

The only difference I have noticed so far in the two versions is the grease zerk on the early version is pointed to 6 O'clock and the later version has the zerk at about the 8 O'clock position like the “-52A” versions that the XLs used.



### K Model-Later-1956, Early, Mid, Late or Post 56 Replacement? Version 2

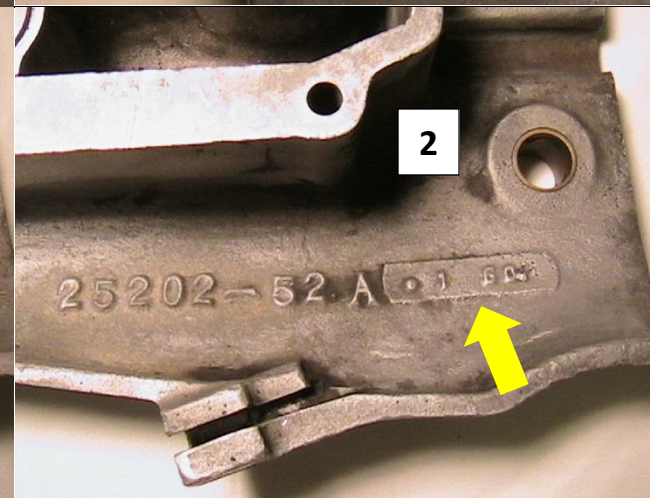
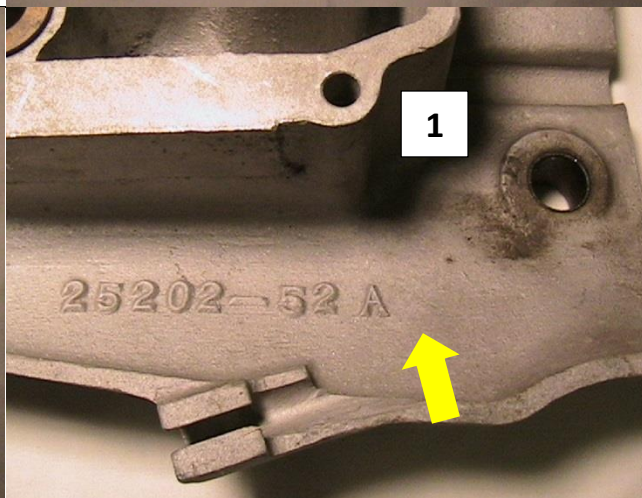
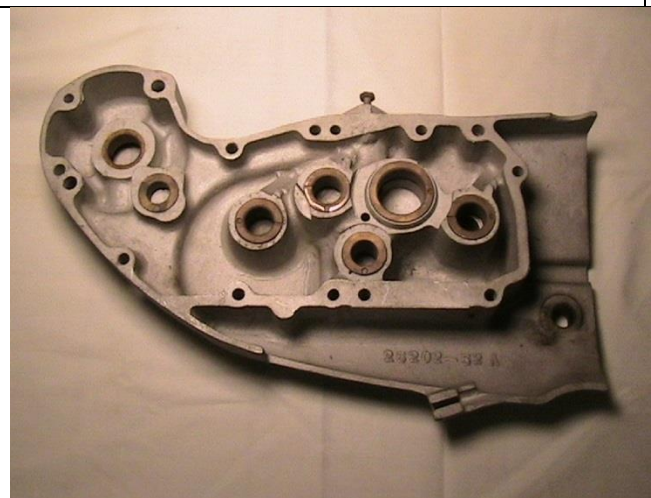




**PN 25200-57 Used on XL, XLH, XLC & XLCH Models 57 Through 62**

**1957-1962**

Believe that the XLs, XLHs & XLCHs 57 through 62 used the same "-52A" cover. One difference is the later covers had a casting code as seen in picture 2, it is absent in picture 1. The earliest cam cover casting date code I have seen was for 1959. I have never seen one on a cover marked 57 or 58. Grease zerk is pointing at approximately 8 O'clock.



**PN 25200-63 Used on XLCH Models 63-67 & XLH Models 63-66**

**1963-1966 XLH-----1963-1967 XLCH**  
Believe that the XLHs 63 through 66 and the XLCH 63 through 67 used the same “-52A” cover. So far the only difference detected between the pre & 63 & on covers are different “oil separators” shown below. The -52PN for the pre 63 and the -63PN for the 63 and on covers.





**PN 25201-67 Used on XLH Models 1967 Only**

1967 XLH Only. Early style cover with corner notched out for the electric start. ". It has the "Oil Vent Line Fitting" PN 62375-62.



**25201-67A, XLH Models 68 Through 70**

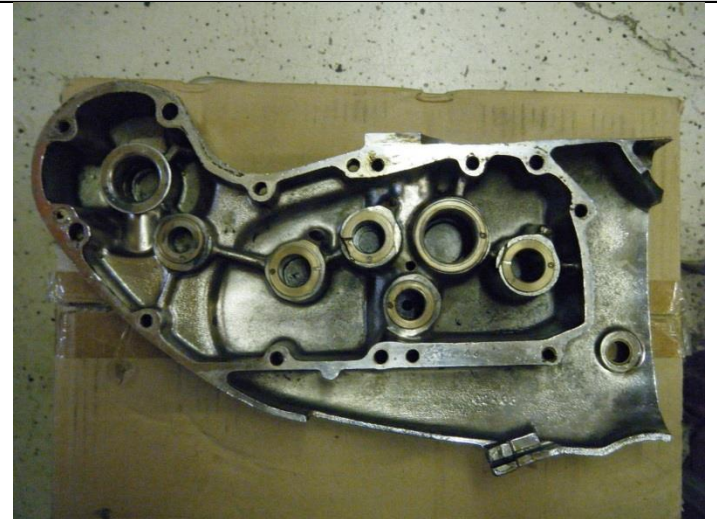
25201-67A, 68-70 XLH. Has 6 "Ribs" with the notched corner for the electric start and used a "Circuit Breaker". It has the "Oil Vent Line Fitting" PN 62375-62.





**25200-63A, XLCH Models 68 Through 69**

25200-63A, 68-69 XLCH. Has 6 "Ribs" **without** the notched corner for the electric start and used a magneto.





25200-70, XLCH Models 1970

25200-70, 70 XLCH. Has 6 "Ribs" **without** the notched corner for the electric start and was the first XLCH to use a vertical "Circuit Breaker" and not a Magneto. It differs from the 68 & 69 XLCH covers in that it has the "Oil Vent Line Fitting" PN 62375-57



**25200-71, XLCH Models 1971-\***

25200-71, 71-\* XLCH. First XLCH with a horizontal "circuit Breaker". Does **not** have notched out area for electric start.





**25201-71, XLH Models 1971-\***

**25201-71, 71-\* XLH. First XLH with a horizontal "Circuit Breaker". Has notched out area for electric start.**

