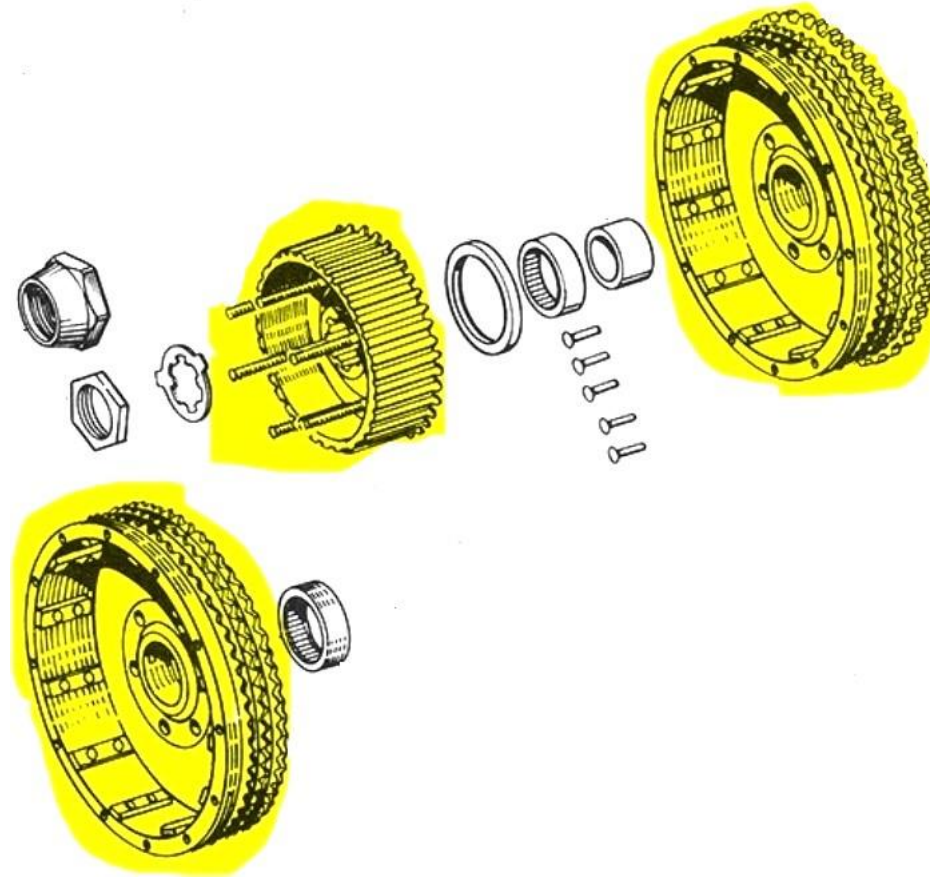


OSKRG Research/Restoration Bulletin #15

K & Sportster Clutch Sprocket Assemblies & Clutch Hub Assemblies




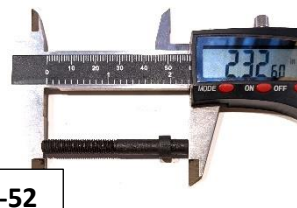





1952-1970 vs2



This OSKRG Bulletin as with all OSKRG Bulletins is a work in progress. This work is far from complete. Many images are still needed as well as feedback concerning errors or omissions. This Bulletin will be updated from time to time as additional data is collected or errors need to be corrected. Please either email additional information/images to graino@comcast.net or post them to <http://www.harleykmodel.com/>.

Yellow indicates when the Parts Books indicate the part originally appears and what years it was used before a replacement part appeared.

Gray indicates what years and models the part could be used for as a replacement.

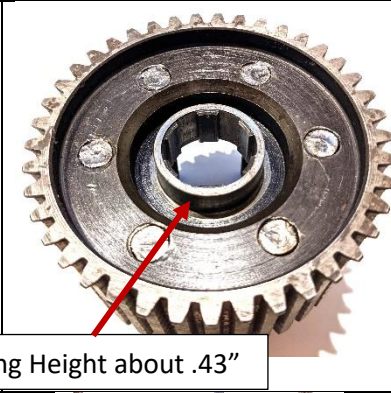
Clutch Hub Assembly Part Number	Models	Years	Outer View	Inner View	Clutch Hub Stud
<p>37556-52 The -52 & -54 studs are the only ones with the "Fat" base. The -52 studs' fat base is much shorter than the later version of the -54 stud. At this time, I believe the original -54 stud had the same fat base height as the -52 stud and at some point, it became taller. The -52 hub is easy to ID since it is about .4" shorter than all of the other hubs. It measures about 1.45". The -52s matching sprocket did not have an oil seal. Used the PN 37700-52 Clutch Sprocket.</p>	<p>K & KK</p>	<p>52-53</p>	 	  <p>Stud PN 37584-52</p>	
<p>37556-54 The -54 hub is one of 4 that has a height of about 1.86". It has fat base studs and its' outer view looks like the -52 hub. The ring height on its' inner view is about .25". All the other hubs that measure about 1.86" will have a much greater ring height. The -54s matching sprocket did not have an oil seal. Used on both the PN 37700-54A & 37701-57 Clutch Sprockets.</p>	<p>KH, KHK, XL</p>	<p>54-Early 57</p>	  <p>At this time, I believe this hubs stud to be the early version of the 37584-54 Stud. Notice that its' fat base portion appears to be the same height or length as the -52 Stud.</p>	 <p>Ring Height about .25"</p>	

37556-57
 The -57 hub is one of 4 that has a height of about 1.86". What differentiates the -57 hub from the other hubs of the same height is the combination of its' fat base studs and an inner view ring height of about .43". Its' outer view is also significantly different than the other hubs with the same height and approximate ring height.

The -57s matching sprocket did have an oil seal. Used the PN 37702-57 Clutch Sprocket.

XL, XLH, XLCH

Later 57-63



Ring Height about .43"



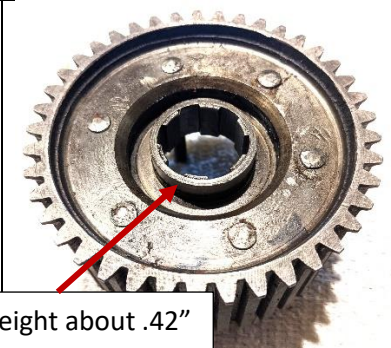
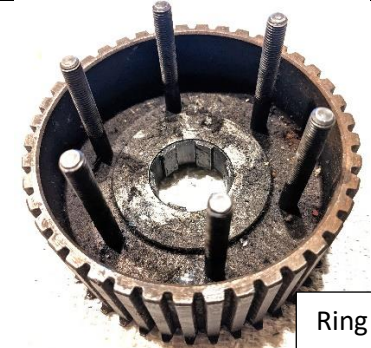
Stud PN 37584-54

37556-57A
 The 57A hub looks quite similar to the -57 hub. They both are about 1.86" in height and their ring heights are about the same. The outer views are different but close enough to confuse the two. What differentiates the -57A hub from all the others is its use of the PN 37584-64 stud. It is the only hub that used this stud. The studs distinguishing features are it has no fat base like the -52, -54 & -57 hubs. Its non-threaded mid region is much larger than the -67 stud used on the -67 & -57B hubs.

The -57As matching sprocket did have an oil seal. Used the PN 37702-57 Clutch Sprocket.

XL, XLH
 XLCH

64-66
 64-68

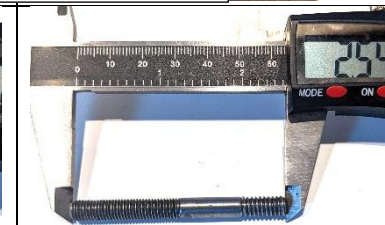
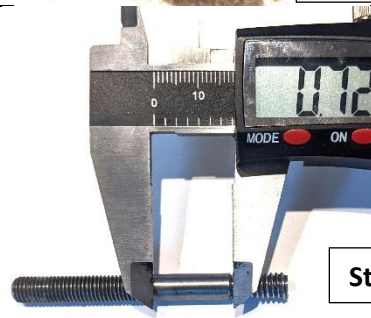


Ring Height about .42"



XLH
 XLCH

Fits Later 57-66
 Fits Later 57-68

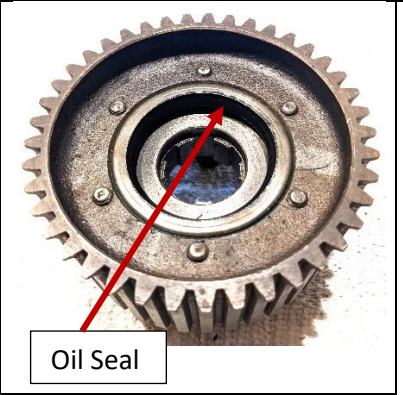


Stud PN 37584-64

37557-67
 The -67 hub like the -52 hub is unique due to its height. It is about .06" shorter than the -54, -57, -57A & -57B hubs. It measures about 1.8". Without a Caliper to measure its height the other identifying features are its use of the PN 37584-67 studs. The only two hubs to use the -67 studs were the -67 and the -57B hubs. Notice the much smaller non-threaded mid region on the -67 stud compared to the larger non-threaded mid region on the -64 stud. The inner and outer views of these two hubs are dramatically different. The inner view of the -67 hub reveals a center void, no ring height. **The -67 hub is the only one where the oil seal is pressed into the hub, not the sprocket.**

XLH
Used the 37700-67 Clutch Sprocket.

67-70



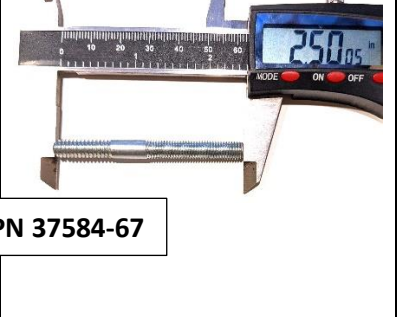
Oil Seal



37556-57B
 The -57B hub measures the same height as the -54, -57 & -57A hubs. Its inner view ring height is a little shorter than the -57 & -57A hubs but without a caliper would be hard to tell. The distinguishing features to identify it by are its use of the -67 studs and its rather unique outer view. Its outer view around its center area is recessed where all the other hubs have a raised portion of sorts. **The -57Bs matching sprocket did have an oil seal. Used the PN 37702-57 Clutch Sprocket.**

XLCH
Used the 37701-70 Clutch Sprocket.

70



Stud PN 37584-67



XLCH

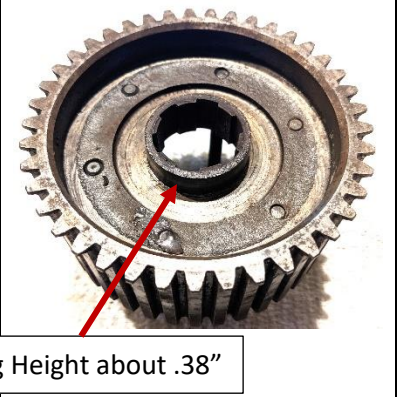
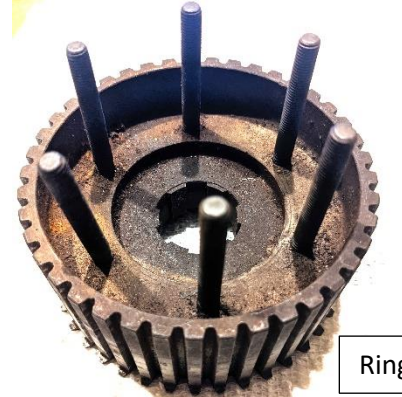
69

XLCH

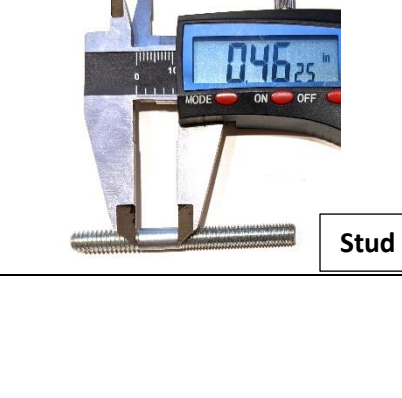
Fits Later 57-69

XLH

Fits Later 57-66






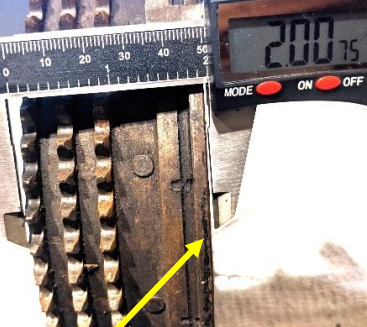





Ring Height about .38"



Stud PN 37584-67

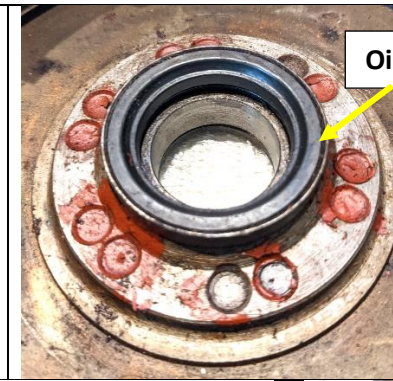


Clutch Sprocket Assembly Part Number	Models	Years	Outer View	Inner View	Side View
<p>37700-52 Has no oil seal and is about .4" shorter than all of the other sprockets. In addition to its' 3 rows of gear teeth it has only 1 outer ring. It only has 6 rivets holding the starter ratcheting gear to the back of the sprocket, all later versions have 12 rivets.</p>	K & KK	52-53			 <p>Short with 1 outer ring.</p>
<p>37700-54A Has no oil seal and its' height is approximately 2". It like the -52 sprocket has in addition to its' 3 rows of gear teeth only 1 outer ring.</p> <p>Note/Caution: The starter ratchets on the clutch sprocket inner view is different on the Ks than on the Sportsters.</p>	KH & KHK	54-56			 <p>1 outer ring.</p>
<p>37701-57 Has no oil seal and its' height is approximately 2". Unlike the -52 and -54A sprockets the 37701-57 has 2 outer rings.</p>	XL	Early 57			 <p>Has 2 outer rings.</p>

Oil Seal Image



No Oil Seal



Oil Seal

37702-57
 Has an oil seal and its height is approximately 2". Unlike the -52 and -54A sprockets the 37702-57 has 2 outer rings. Again, what distinguishes the 37702-57 sprocket from the 37701-57 sprocket is the addition of the oil seal.

XL & XLH
 XLCH

Late 57-66
 Late 57-69

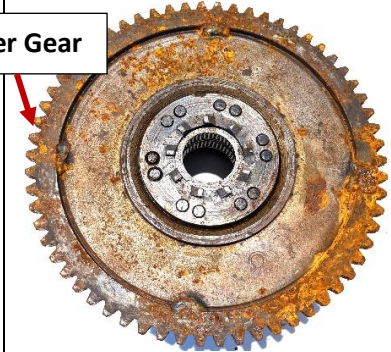
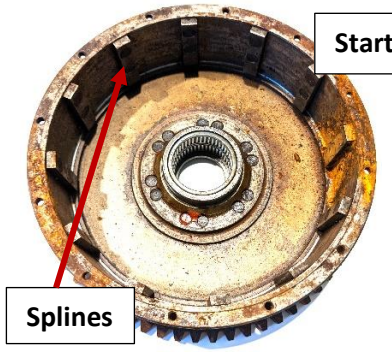


Has 2 outer rings.

37700-67
 The -67 sprocket is easy to ID in that it will have 12 splines on the inside of the shell protruding inward. In addition to the 3 rows of primary chain gear teeth it will have a starter gear. Sprockets after 1970 don't have the splines on the inside of the sprocket, instead they have grooves on the inside of the sprocket.

XLH

67-70



Starter Gear

Splines



37701-70
 This one year only, one model only sprocket for the XLCH can be ID by several features. It is taller/deeper like the -67 sprocket. It does not have a starter gear like the -67 but like the -67 it does not have an oil seal at its center. Instead, the oil seal is fitted to the hub and fits over and around the raised portion at the center of the sprocket.

XLCH

70



Image Needed